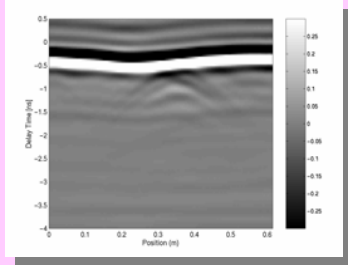


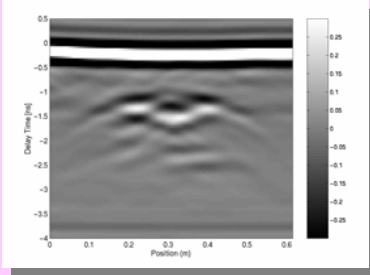
Chi-Chih Chen

TEL: (614) 292-3403, FAX: (614) 292-7297, E-mail: Chen.118@osu.edu

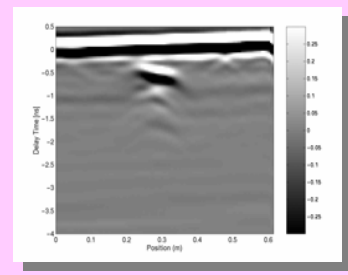
<http://esl.eng.ohio-state.edu/topics/gpr/gpr.html>



TS-50 AP Mine



M-19 Plastic AT Mine

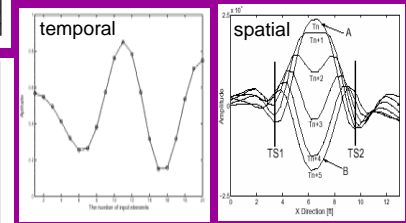
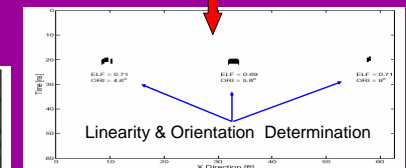
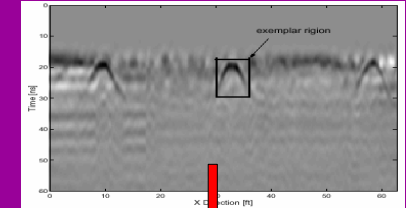
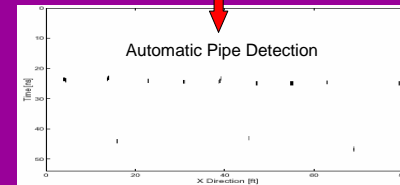
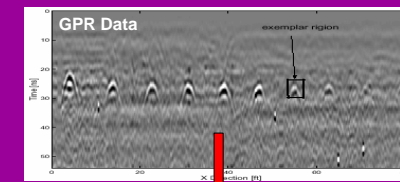
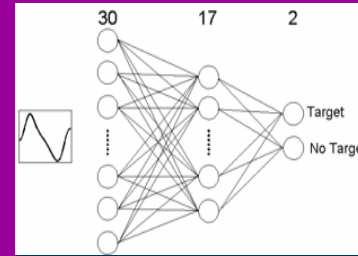


PMA-3 AP Mine

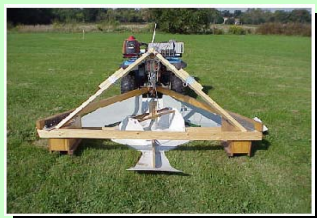
UWB, fully polarimetric GPR system applied for automatic detection and classification of buried drainage pipes using Neural Network

Developed various radar systems and processing techniques for LANDMINE detection and classification based on scattering patterning

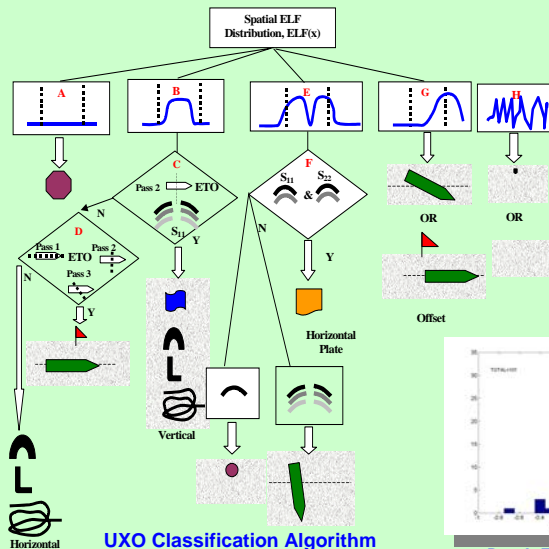
State-of-Art UWB, fully polarimetric GPR system and data processing tools for the classification of buried unexploded ordnance (UXO) based on natural resonance and polarization signatures with additional signatures from other sensors.



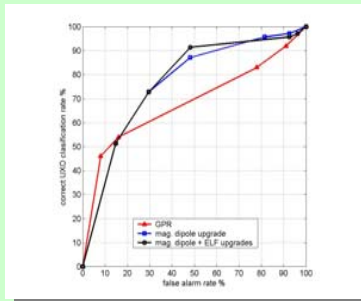
Feature Patterns



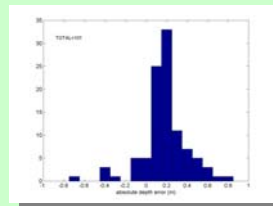
Field Demonstration in UXOSites



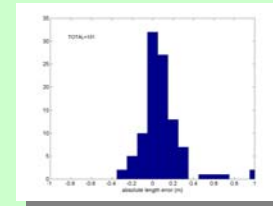
UXO Classification Algorithm



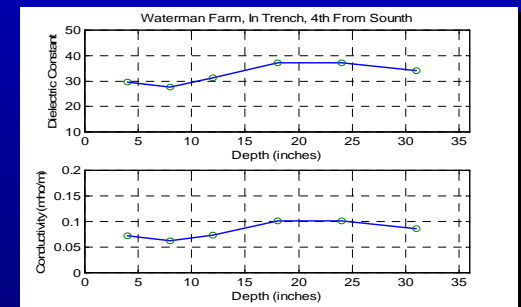
ROC Curves from Blind Field Test



Depth Estimation Error



Length Estimation Error



Soil Electrical Property Characterization



Graduate Students in Actions